

\$89,000 - Lot 49-50 Dirty Creek, Clyde River

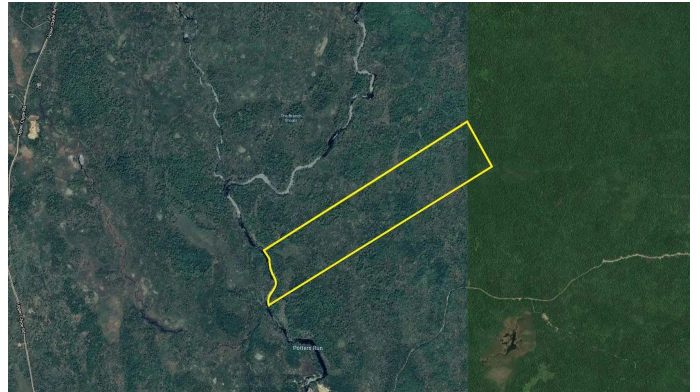
MLS® #202103110

\$89,000

Bedroom, Bathroom,
Land on 218.86 Acres

F3, Clyde River, NS

219 acres of recreation land, NO deeded access, 1600 ft. of frontage on the Clyde River. well treed, there is an ATV trail that runs across the property. property size 2km long and 400m wide.



Essential Information

MLS® #	202103110
Price	\$89,000
Acres	218.86
Type	Land
Sub-Type	Unimproved Land
Status	Closed
Date Sold	January 31st, 2024

Community Information

Address	Lot 49-50 Dirty Creek
Area	South Shore
District	407-Shelburne County
Sub-District	F3
City	Clyde River
County	Shelburne
Province	NS
Postal Code	B0T 1W0

Amenities

Utilities	None
Parking	None
View	River

Is Waterfront	Yes
Waterfront	River Front, River Access, Stream/Pond

Exterior

Lot Description	Hardwood Bush, Softwood Bush, Wooded, Over 100 Acres
-----------------	--

Additional Information

Zoning	resource
--------	----------

Listing Details

Listing Office	Keller Williams Select Realty (Shelburne)
----------------	---

NSAR IDX Reciprocity listings are displayed in accordance with NSAR's IDX Agreements and property information is provided under copyright© by the Nova Scotia Association of REALTORS®. The above information is from sources deemed reliable but it should not be relied upon without independent verification.

Listing information last updated on October 14th, 2025 at 9:17pm ADT