

\$70,000 - Lot Highway 217, East Ferry

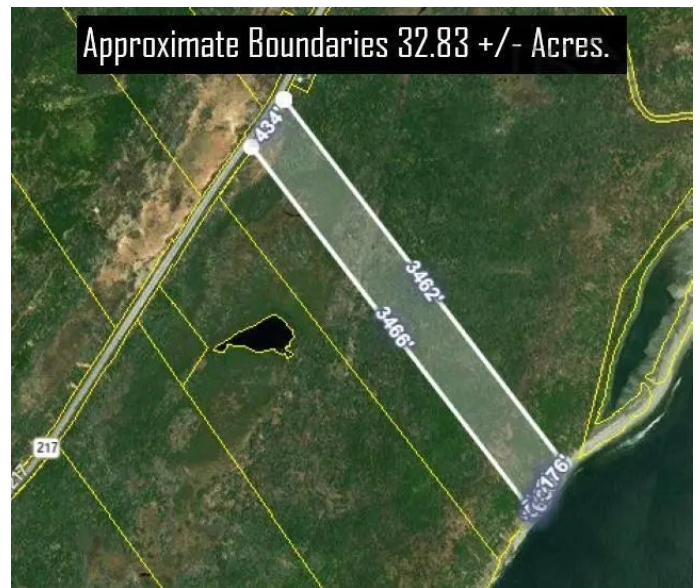
MLS® #202215241

\$70,000

Bedroom, Bathroom,
Land on 32.83 Acres

V4, East Ferry, NS

Dreaming of owning your own land with water frontage? Dream no longer, 32.83 +/- acres in East Ferry on St. Mary's Bay awaits you! So much to see and do in the area, like taking the ferries to Long and Brier Islands for the most popular whale watching destination in Nova Scotia or hiking Balancing Rock. Visiting Sandy Cove's sandy beach and Lake Midway Provincial Park for swimming and fishing is also close by. Digby, known for its world famous scallops is a 30 minute drive leading you to all the amenities. So let your dreams of a cottage, home or maybe just adding to your portfolio become a reality.



Essential Information

MLS® #	202215241
Price	\$70,000
Acres	32.83
Type	Land
Sub-Type	Unimproved Land
Status	Closed
Date Sold	June 29th, 2023

Community Information

Address	Lot Highway 217
Area	Annapolis Valley
District	Digby County
Sub-District	V4
City	East Ferry

County	Digby
Province	NS
Postal Code	B0V 1E0

Amenities

Utilities	To Be Verified
Parking	None
Is Waterfront	Yes
Waterfront	Waterfront, Ocean Front

Exterior

Lot Description	Not Landscaped, Wooded, 10 to 49.99 Acres
-----------------	---

Additional Information

Zoning	GD
--------	----

Listing Details

Listing Office	Exit Realty Town & Country
----------------	----------------------------

NSAR IDX Reciprocity listings are displayed in accordance with NSAR's IDX Agreements and property information is provided under copyright© by the Nova Scotia Association of REALTORS®. The above information is from sources deemed reliable but it should not be relied upon without independent verification.

Listing information last updated on October 13th, 2025 at 5:32pm ADT