

\$20,000 - Lot Old Port Medway Road, Beach Meadows

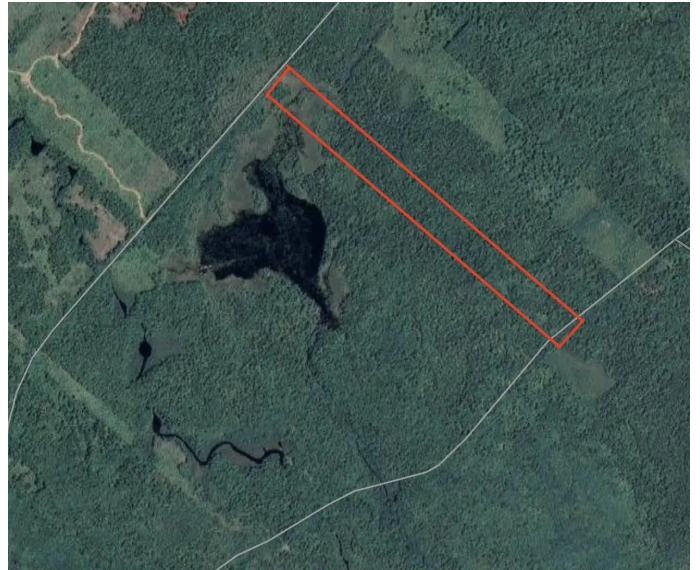
MLS® #202220335

\$20,000

Bedroom, Bathroom,
Land

E3, Beach Meadows, NS

Your opportunity to purchase over 20 acres of woodland in Beach Meadows, Queens County. This lot has numerous stands of softwood trees, along with some hardwood. This lot is located 15 mins from Liverpool and 30 mins from Bridgewater. Call today for more information.



Essential Information

MLS® #	202220335
Price	\$20,000
Type	Land
Sub-Type	Unimproved Land
Status	Closed
Date Sold	November 10th, 2022

Community Information

Address	Lot Old Port Medway Road
Area	South Shore
District	406-Queens County
Sub-District	E3
City	Beach Meadows
County	Queens
Province	NS
Postal Code	B0J 1H0

Amenities

Utilities	None
Parking	None

Exterior

Lot Description Softwood Bush, Wooded, 10 to 49.99 Acres

School Information

Elementary Dr. John C. Wickwire Academy
Middle South Queens Middle School
High Liverpool Regional High School

Additional Information

Zoning Resource

Listing Details

Listing Office EXIT Realty Inter Lake Liverpool

NSAR IDX Reciprocity listings are displayed in accordance with NSAR's IDX Agreements and property information is provided under copyright© by the Nova Scotia Association of REALTORS®. The above information is from sources deemed reliable but it should not be relied upon without independent verification.
Listing information last updated on October 11th, 2025 at 7:32pm ADT