

\$33,500 - Lot 170b Clam Harbour Road, Clam Bay

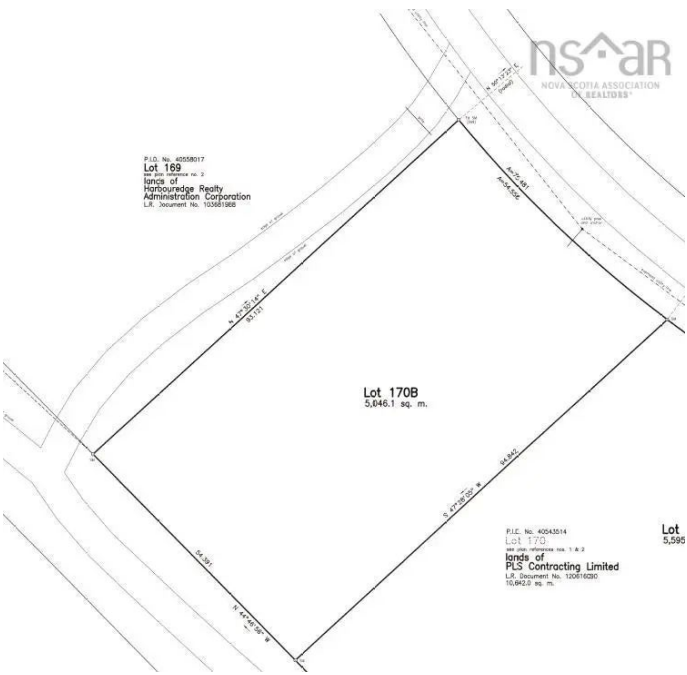
MLS® #202319098

\$33,500

Bedroom, Bathroom,
Land on 1.25 Acres

35-A, Clam Bay, NS

This newly subdivided lot is HRM approved, perc tested and a part of the Abbecombec gated community with access to stunning beach! Lot has 175 ft road frontage and is 350 ft deep with access to power and high speed internet. Build the home or cottage of your dreams with only a short commute to metro! 5 minutes from Clam Harbour Beach Provincial Park and 15 minutes from the amenities of Head of Jeddore (Sobeys, hardware, NSLC, Pub, Cafe etc.)



Essential Information

MLS® #	202319098
Price	\$33,500
Acres	1.25
Type	Land
Sub-Type	Unimproved Land
Status	Closed
Date Sold	February 20th, 2024

Community Information

Address	Lot 170b Clam Harbour Road
Area	Halifax - Dartmouth
District	35-Halifax County East
Sub-District	35-A
City	Clam Bay
County	Halifax
Province	NS

Postal Code B0J 2L0

Amenities

Utilities None

Parking None

Exterior

Lot Description Wooded, 1 to 2.99 Acres

School Information

Elementary Oyster Pond Academy

Middle Oyster Pond Academy

High Eastern Shore District High School

Additional Information

Zoning MU

Listing Details

Listing Office Century 21 Trident Realty Ltd.

NSAR IDX Reciprocity listings are displayed in accordance with NSAR's IDX Agreements and property information is provided under copyright© by the Nova Scotia Association of REALTORS®. The above information is from sources deemed reliable but it should not be relied upon without independent verification.

Listing information last updated on October 15th, 2025 at 2:17am ADT