

\$15,000 - Deep Hollow Road, White Rock

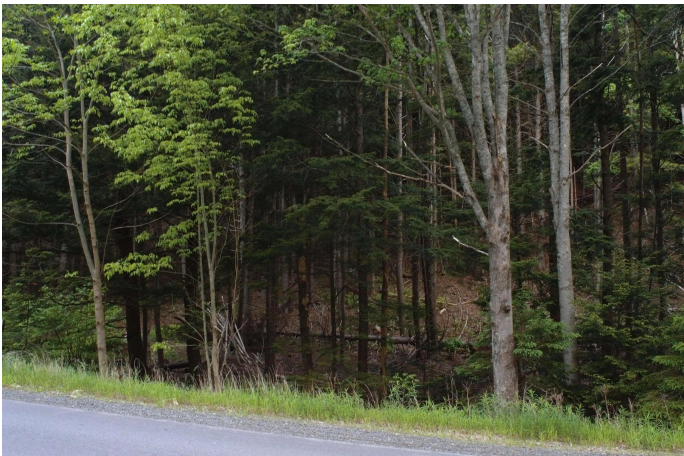
MLS® #202412370

\$15,000

Bedroom, Bathroom,
Land on 1.00 Acres

V2, White Rock, NS

1 Acre Lot located just minutes from the communities of New Minas & Greenwich. Easy highway access for commuting. Zoned A2, so many possibilities.



Essential Information

MLS® #	202412370
Price	\$15,000
Acres	1.00
Type	Land
Sub-Type	Unimproved Land
Status	Closed
Date Sold	August 29th, 2024

Community Information

Address	Deep Hollow Road
Area	Annapolis Valley
District	Kings County
Sub-District	V2
City	White Rock
County	Kings
Province	NS
Postal Code	B4P 0B3

Amenities

Utilities	Electricity Connected, High Speed Internet, Phone Connected
Parking	None

Exterior

Lot Description 1 to 2.99 Acres

Additional Information

Zoning R2

Listing Details

Listing Office Keller Williams Select Realty (Kentville)

NSAR IDX Reciprocity listings are displayed in accordance with NSAR's IDX Agreements and property information is provided under copyright© by the Nova Scotia Association of REALTORS®. The above information is from sources deemed reliable but it should not be relied upon without independent verification.

Listing information last updated on October 14th, 2025 at 9:01am ADT