

# \$469,900 - 5 Wamphray Crescent, Dartmouth

---

MLS® #202413626

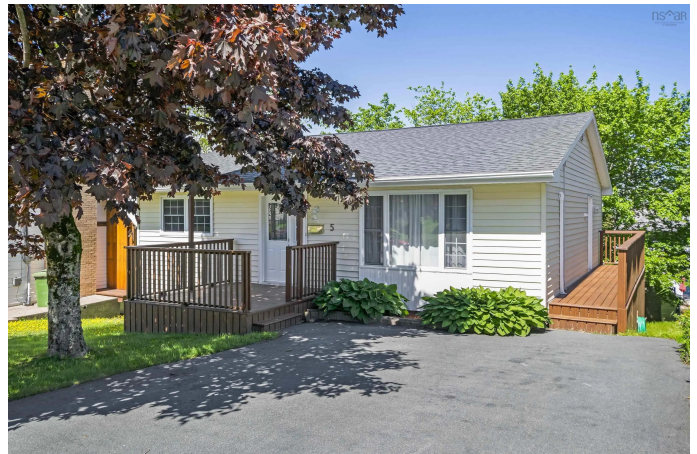
**\$469,900**

4 Bedroom, 2.00 Bathroom, 2,364 sqft

Residential on 0.11 Acres

15-A, Dartmouth, NS

Located on a quiet low traffic street in an excellent Dartmouth location is this bright upgraded and well maintained 4 bedroom and 2 bath home. Enjoy air conditioning and low cost heat with the ductless heat pump (installed in 2017). An Electro Thermal Storage Unit (ETS) and time of day electric system were also installed in 2017 so the house is very inexpensive to heat and cool at only \$216 month. All hard flooring except carpet on basement stairs. Same high quality laminate in most of the house giving a modern look. Great layout with all good sized rooms. Basement bedroom and bath is ideal for guest, older child or work from home. Maintenance free exterior with vinyl siding and windows. Many upgrades including roof shingles (2021). flooring, main bath and more. Excellent schools including Woodlawn High School. Easy commute to Shearwater or Halifax and all amenities a short drive away. This house will not last !!!



Built in 1984

## Essential Information

MLS® #	202413626
Price	\$469,900
Bedrooms	4
Bathrooms	2.00
Full Baths	2
Square Footage	2,364

Acres	0.11
Year Built	1984
Type	Residential
Sub-Type	Single Family Residence
Style	Bungalow
Status	Closed
Date Sold	July 22nd, 2024

### Community Information

Address	5 Wamphray Crescent
Area	Halifax - Dartmouth
District	15-Forest Hills
Sub-District	15-A
City	Dartmouth
County	Halifax
Province	NS
Postal Code	B2W 5B4

### Amenities

Utilities	Electric, Cable Connected, Electricity Connected, Phone Connected
Parking Spaces	2
Parking	No Garage, Double, Paved

### Interior

Interior Features	High Speed Internet
Appliances	Electric Range, Dishwasher, Dryer - Electric, Washer, Refrigerator
Heating	Baseboard, Electric, Ductless
Has Basement	Yes
Basement	Full, Finished, Walk-Out Access

### Exterior

Lot Description	Under 0.5 Acres, Landscaped
Roof	Asphalt
Construction	Vinyl Siding
Foundation	Concrete Perimeter

### School Information

Elementary	Mount Edward Elementary School
Middle	Eric Graves Memorial Junior High School

High Woodlawn High

### **Additional Information**

Zoning R1

### **Listing Details**

Listing Office Royal LePage Anchor Realty

NSAR IDX Reciprocity listings are displayed in accordance with NSAR's IDX Agreements and property information is provided under copyright© by the Nova Scotia Association of REALTORS®. The above information is from sources deemed reliable but it should not be relied upon without independent verification.

Listing information last updated on October 12th, 2025 at 2:17am ADT